

# BUY ANY FRESH FRUITS & VEGGIES

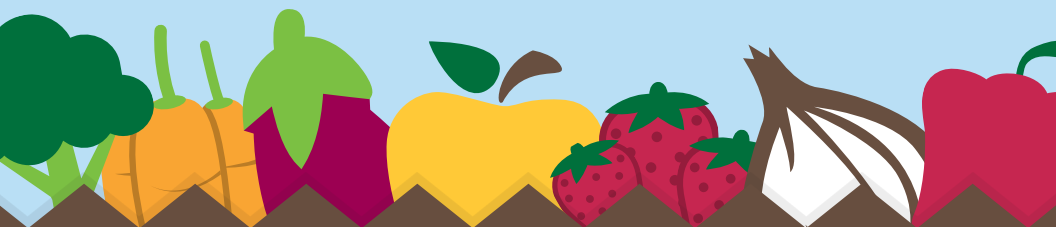
with your Bridge Card and get **FREE** Double Up Food Bucks to spend on any fresh fruits & veggies.



**BUY \$1**  
FRUITS & VEGGIES



**GET \$1**  
FREE FRUITS & VEGGIES



## Farmers Markets

Visit the info table first to get started. Buy any SNAP-eligible foods with your Bridge Card and get **FREE** Double Up Food Bucks to spend on Michigan grown, fresh fruits & veggies.

## Grocery Stores

Buy fresh fruits & veggies with your Bridge Card and get **FREE** Double Up Food Bucks to spend on any fresh fruits & veggies.

Have questions? Call us! **866-586-2796** or visit [www.DoubleUpFoodBucks.org](http://www.DoubleUpFoodBucks.org)



# VISIT A DOUBLE UP SITE NEAR YOU!



## GROCERY STORES

### Gleaner's Mobile Grocer

Hours and locations vary in Detroit. Call 313-571-0303  
April 2 - December 31

## FARMERS MARKETS & FARM STANDS SEE LOCATIONS FOR SPECIFIC DATES

### Brightmoor Artisans Farmers Market \*

22735 Fenkell Street (Detroit)  
June 2 - October 6  
Fridays 4pm - 7pm

### Canton Farmers Market

500 North Ridge Road  
June 17 - October 7  
Saturdays 9am - 1pm

### City of Melvindale DDA Farmers Market

3696 Oakwood Boulevard  
May 29 - October 26  
Wednesdays 2pm - 6pm

### Corktown Farmers Market \*

1236 Michigan Avenue (Detroit)  
May 25 - October 26  
Thursdays 4pm - 7pm

### Dearborn Farmers and Artisans Market

22100 Michigan Avenue  
May 19 - October 6  
Fridays 9am - 2pm

### Detroit International Academy for Young Women Farm Stand +

9026 Woodward Avenue  
July 11 - October 31  
Tuesdays 3pm - 5pm

### Drew Transition Center Farm Stand +

9600 Wyoming Avenue (Detroit)  
July 14 - November 3  
Fridays 3pm - 4:30pm

### Eastern Market

2934 Russell Street (Detroit)  
Year-Round  
Saturdays 6am - 4pm  
Tuesdays 9am - 3pm  
Sundays 10am - 4pm

### Food Field Farm Stand

1600 Lawrence Street (Detroit)  
May 30 - October 28  
Tuesdays & Thursdays  
10am - 5pm  
Saturdays 10am - 1pm

### Hannan House Farm Stand +

4750 Woodward Avenue (Detroit)  
July 11 - August 8  
Tuesdays 11am - 1pm

### Islandview Farmers Market \*

7200 Mack Avenue (Detroit)  
June 21 - September 27  
Wednesdays 4pm - 7pm

### Lincoln Park Farmers Market

Fort Street & Southfield Road  
June 4 - October 29  
Sundays 11am - 4pm

### Martin Luther King Jr. High School Farm Stand +

3200 East Lafayette Street (Detroit)  
July 13 - November 2  
Thursdays before Labor Day:  
11am - 1pm  
After Labor Day:  
4pm - 6:30pm

### Meldrum Fresh Market \*

1264 Meldrum Street (Detroit)  
May 19 - November 17  
Thursdays 11am - 2pm

### Nichols Elementary Middle School Farm Stand +

3000 Burns Avenue (Detroit)  
July 13 - November 2  
Thursdays before Labor Day:  
1pm - 3pm  
After Labor Day:  
4pm - 6:30pm

### Northwest Detroit Farmers Market \*

18445 Scarsdale Street  
June 1 - October 12  
Thursdays 4pm - 8pm

### Palmer Park Preparatory Academy Farm Stand +

3901 Margareta Avenue (Detroit)  
July 12 - November 1  
Wednesdays 4pm - 6:30pm

### Peaches and Greens Mobile Truck \*

Locations vary in Detroit.  
Call 313-870-9210 or visit  
[www.peachesandgreens.org](http://www.peachesandgreens.org)  
Year-Round

### Peaches and Greens Produce Market \*

8838 3rd Street (Detroit)  
Year-round  
Tuesdays - Fridays  
10am - 6pm  
Saturdays 10am - 2pm

### Penrose Market Garden

19416 Charleston Street (Detroit)  
July 11 - October 31  
Tuesdays 4pm - 7pm

### Randolph CTC & FLICS Farm Stand +

171701 Hubbell Street (Detroit)  
July 12 - November 1  
Wednesdays before Labor Day:  
11am - 1pm  
After Labor Day: 3pm - 5pm

### Sowing Seeds Growing Futures Farmers Market \*

18900 Joy Road (Detroit)  
June 6 - October 10  
Tuesdays 3pm - 7pm

### Wayne State University Farmers Market

5401 Cass Avenue (Detroit)  
June 7 - October 25  
Wednesdays 11am - 4pm

### Westland Farmers and Artisans Market

1901 North Carlson  
May 11 - October 12  
Thursdays 3pm - 7pm

### Wyandotte Farmers Market

Elm Street & First Street  
June 8 - October 19  
Thursdays 12pm - 6:30pm

\* Detroit Public Schools Farm Stands

+ Detroit Community Markets | [www.detroitmarkets.org](http://www.detroitmarkets.org)

\*Information subject to change. Printed Spring 2017

## WAYNE COUNTY



USDA is an equal opportunity provider and employer. For food help contact the toll free Michigan Food Assistance Program Hotline: (855) ASK-MICH