

Provider Newsletter - June 2025



Wave 2 CoC & CoC+ Appointment Agenda Program

Wave 2 of the 2025 program has been released and is in the Provider Portal! We are pleased to continue the 2025 Continuity of Care (CoC) Program. This initiative aims to reward primary care providers (PCPs) for proactively coordinating preventive medicine and thoroughly assessing patients to improve health and clinical quality of care. By participating in this program, you can earn up to **\$450 per member** based on program-specific requirements. Reach out to your QPA/PQL with any questions.



2025 CoC & CoC+ Provider Portal Training

We are offering a Medicare-focused provider webinar that covers Centene's CoC & CoC+ Programs. Attendees will learn how these programs work, how to access and use the tools in the portal, as well as how to support accurate documentation and care for your patients. All staff are welcome to attend this training!

For more information, [click here](#). Reach out to your QPA/PQL with any questions.

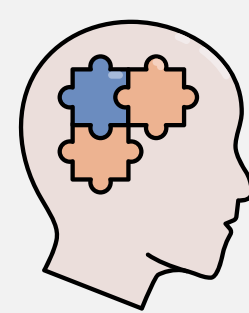


2025 Behavioral Health Measure Changes

The Measurement Year (MY) 2025 changes to the behavioral health measures include:

- Antidepressant Medication Management (Retired)
- Follow-Up Care for Children Prescribed ADHD Medication
- Follow-Up After Hospitalization for Mental Illness
- Follow-Up After Emergency Department Visit for Mental Illness
- Social Need Screening and Intervention

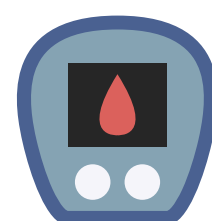
For more information, please [click the link to our flyer](#). You can also reach out to your QPA/PQL with any questions.



2025 CCIP Outreach

Our Diabetes Chronic Care Improvement Program is set to continue in the coming weeks. All Meridian Complete, Medicare, and Medicaid members with at least one claim-based diagnosis of diabetes in 2022 to 2025 are in the eligible population. This program was effective as of 1/1/2022 and will be conducted over a multi-year cycle. The goal is to engage members with chronic conditions through increased outreach initiatives to improve health outcomes and increase member satisfaction. This will promote effective management of chronic diseases. All applicable member lists will be sent by your PQL/QPA in the coming weeks.

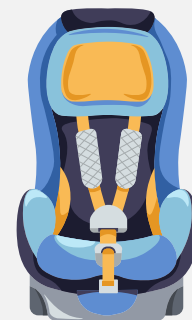
For more information, please [click here](#).



2025 Patient Screening Kits

In April we sent out the first round of Colorectal Cancer Screening (COL) test kits being sent out for all Medicare patients on our Plans. Kits should arrive mid-April to these patients. Patients that need a replacement kit may request them as needed. Results will be sent to the PCP the patient is assigned to. All eligible Medicare Members will receive Cologuard kits from our vendor, Exact Science. Cologuard is the DNA-FIT Test that gives the patient 3 years of compliance.

We will also be sending out home test kits to patients due for their Kidney Health Evaluation (KED) and HbA1c (GSD) measures. They received them from our vendor, Everly around mid-April. For more information, please reach out to your QPA/PQL with any questions.



Meridian + National Kidney Foundation

Meridian is proud to partner with the National Kidney Foundation to advance the early detection and management of Chronic Kidney Disease (CKD). We're encouraging all providers to begin routine CKD screening using two simple, evidence-based tests:

- Urine Albumin-to-Creatinine Ratio (uACR) – a “spot” urine test to detect albuminuria
- Serum Creatinine – to estimate glomerular filtration rate (eGFR)

These tests are essential for identifying CKD early – before symptoms appear – allowing for timely intervention and improved patient outcomes. Making kidney health a priority, is our priority. For more information, please



Kidney Month Communications Toolkit

1 in 3 adults in the U.S. is at risk for Kidney Disease. Early detection and healthy lifestyle changes can prevent or manage Kidney Disease. Risk factors include diabetes, high blood pressure, family history, and obesity. Regular check-ups and screenings can save lives. Providers are encouraged to educate their patients about the two tests needed to complete the KED measure. Those tests are eGFR, a blood test, and uACR, a urine test. This toolkit has great information on Social Media, Email Marketing, Media & Press Relations, and Community Outreach. For more information, please [click the link to the toolkit](#).

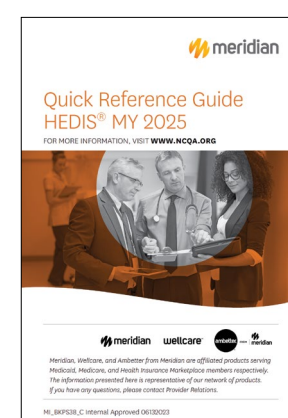
You can also reach out to your QPA/PQL with any questions.



2025 Quick Reference Guide for HEDIS

Our 2025 Guide for HEDIS measures has arrived! Within this guide, you can navigate through an index of the HEDIS measures that are tracked, find the applicable CPT codes for each measure listed, view information on Administrative Claims, Supplemental Data and Feeds. Be sure to check into the changes for 2025!

For more information, [click here](#).

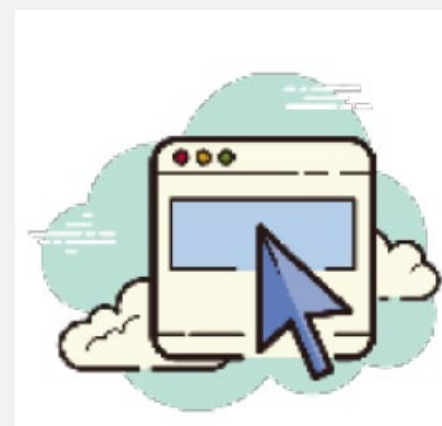


Meridian Portal Access & Self Service Option

Please make sure you have portal access for all staff members. This is where you will find all of your reporting and gain access to your CoC Appointment Agenda's. If you need assistance with access or have any questions, please reach out to your Quality representative.

For those needing access, please register for the portal(s) using the following links:

- [WellCare Portal - https://provider.wellcare.com/](https://provider.wellcare.com/)
- [Centene Portal - https://provider.mimeridian.com](https://provider.mimeridian.com)
- [AmBetter Portal - https://provider.ambettermeridian.com](https://provider.ambettermeridian.com)



Self-Service Options

- Terminations
- Updating credentialing files
- Demographic information changes, etc.
- Now available on the Meridian website: <https://www.mimeridian.com/providers/join-our-network.html>

Measure Spotlight

Eye Exam for Patients with Diabetes (EED)

This measure evaluates the percentage of members 18-75 years of age with Diabetes (type 1 and type 2) who had a dilated or retinal eye exam

Refer your Diabetic members to an eye care professional annually to complete a retinal or dilated eye exam or complete in office and send exam to Ophthalmologist or Optometrist for review and sign off

If a patient tests negative for retinopathy, an eye exam can be performed every other year

Tips and Best Practices:

Conduct outreach to Diabetic population about yearly Dilated Retinal Exams

Remind patients that are concerned with costs, that the Dilated Retinal Exam is a covered medical benefit

Support exam scheduling at accessible In-Network facilities during the patients visit and have referrals easily accessible or standing orders

Kidney Health Evaluation for Patients with Diabetes (KED)

This measure evaluates the percentage of members 18-85 years of age with Diabetes (type 1 and type 2) who received a Kidney Health Evaluation, defined by an Estimated Glomerular Filtration Rate (eGFR) and a Urine Albumin-Creatinine Ratio (uACR), during the measurement year

Perform both eGFR and uACR testing annually for patients with Diabetes. UACR testing can be either of the following:

- Urine Albumin Creatinine Ration Lab Test
- Both a quantitative Urine Albumin lab test and a Urine Creatinine test with service dates four days or less apart

Tips and Best Practices:

- Member reported results are acceptable if documented in the chart with the test date and value. Ensure your EMR has appropriate fields to house this data for all visit types
- This is not a measure where the results of the tests will affect compliance. The intent is that the services were completed
- Encourage members to have annual testing for appropriate identification, staging, monitoring and treatment of Kidney Disease
- Offer lab testing on-site or support lab scheduling at accessible In-Network facilities during the patients visit and have referrals easily accessible or standing orders ready

